

09-12 / 17

September - December 2017



EVENTS AND PERFORMANCE

# FRENCH CONNECTIONS

From September through to July, we'll be celebrating the music of France and its impact across the world. Our year-long festival will have French music at its heart, as we explore past and present connections with France and its great cultural centre, Paris. RNCM students are at the forefront of the programme and next Spring, they join together with students from the Paris Conservatoire for concerts in Manchester, London and Paris, as a future generation of international performers recreates the musical life of wartime past.

For full details, go to [www.rncm.ac.uk/frenchconnections](http://www.rncm.ac.uk/frenchconnections) where we'll be adding more events over the coming weeks and months.

**FRI 15 SEP // 7.30pm**  
// RNCM Concert Hall

## HIDDEN VOICE JOHN MCHUGH AND THE MISHIMA QUARTET

John McHugh and the Mishima Quartet present *Hidden Voice*, a unique multi-media composition based on the speech of people living with dementia, Steve Reich's *Different Trains*, music based on the intonations in the Liverpool accent and the boxing moves of Muhammad Ali. Tickets £13.50  
Promoted by Music in Mind

**MON 25 SEP // 7.30pm**  
// RNCM Concert Hall

## MANCHESTER CHAMBER CONCERTS SOCIETY RAZUMOVSKY ENSEMBLE, RUBY HUGHES (soprano) AND MARTIN ROSCOE (piano)

**Johannes Brahms** Two songs for voice, viola and piano Op 91  
**Gustav Mahler** Piano Quartet Movement in A minor  
**Ottorino Respighi** 'Il Tramonto' (The Sunset): Lyric poem for voice and string quartet  
**Gabriel Fauré** Cello Sonata No 2 in G minor Op 117  
**Gabriel Fauré** La Bonne Chanson for voice, string quintet and piano Op 61  
Tickets £25, platform seats £12.50  
Promoted by MCCS

+

6.30pm  
// Forman Lecture Theatre

**PRE-CONCERT TALK**  
Free admission to ticket holders

**FRI 29 SEP // 6.30pm**  
// RNCM Concert Hall

## CARMEN IN 40 MINUTES

**Georges Bizet** Suite from *Carmen*

**Clark Rundell, Jack Sheen**  
*conductors*

For the first student concert of the season, we're delighted to present a whirlwind tour of Bizet's red-hot classic. Performed exclusively by our new Year 1 RNCM students, this launches our *French Connections* project – a year-long celebration of the music of France and its impact across the world – that includes major concerts in Paris, Manchester and London next Spring. Keep up to date about *French Connections* at [www.rncm.ac.uk/frenchconnections](http://www.rncm.ac.uk/frenchconnections)  
Free admission, no ticket required

**MON 02 OCT // 1.15pm**  
// RNCM Concert Hall

## MONDAY RECITAL SERIES

**Gaspar Cassadó** Suite for solo cello

**Harriet Walker** *cello*

**Johannes Brahms** Wir Wandelten Op 96 No 2

**Johannes Brahms** Ständchen Op 106 No 1

**Johannes Brahms** Es rauschet das Wasser Op 28 No 3

**Johannes Brahms** Der Jäger und sein Liebchen Op 28 No 4

**Trad (arr Vignoles)** Three Water Songs

**Rhiain Taylor** *mezzo-soprano*

**Matthew Nuttall** *baritone*

**Rachel Fright** *piano*

Free admission, no ticket required

**MON 02 OCT // 7.30pm**  
// RNCM Theatre

## TUBULAR BELLS FOR TWO

Ask anyone who grew up in the 70s and they will be able to tell you exactly where they were when they first heard *Tubular Bells*. Composed by Mike Oldfield in 1973, the album was the first release on Richard Branson's fledgling record label, Virgin Records. It went on to sell over 30 million copies and became the soundtrack to the cult-classic film, *The Exorcist*.

Now, more than 40 years on, two Australian multi-instrumentalists are presenting this modern masterpiece in a challenging live event. So what's the catch? Oldfield harnessed – what was at the time – the latest in multi-track recording technology, playing a multitude of instruments one-by-one in the studio.

However, in *Tubular Bells for Two*, there are only two men on stage needing to perform every part live with only four hands and four feet between them. The duo are literally rushed off their feet as they dash around a sea of 20+ instruments. It is an intricately choreographed, thrilling piece of tightrope theatre. Things can go wrong at any moment, and the slightest mistake or misplaced limb can bring the entire show crashing to a halt...

Tickets £22.50 advance  
Promoted by AAA Entertainment

**WED 04 OCT // 7.30pm**  
// RNCM Concert Hall

## THE MUSIC OF PROOF: WHAT DOES MATHS SOUND LIKE?

**WITH MARCUS DU  
SAUTOY (mathematician)  
AND EMILY HOWARD  
(composer)**

Is there maths hidden inside music? Is there music hidden in maths? This October, PRiSM, based at the RNCM, is exploring the eternal connection and differences between the art of music and the science of maths. Listen to a new collection of miniatures for string quartet: five short movements each associated with a different mathematical idea. Play with a new app that will be launched during the evening inviting the audience to match the maths in musical fragments. Join composer Emily Howard and mathematician Marcus du Sautoy in a discussion about how maths and music are intertwined.

Read more about PRiSM at  
[www.rncm.ac.uk/prism](http://www.rncm.ac.uk/prism)

Tickets £5  
No concessions  
Promoted by RNCM in association with Manchester Science Festival and Oxford e-Research Centre

+

4.15pm  
// Forman Lecture Theatre

## RESEARCH FORUM: In Conversation –

Composer Emily Howard and mathematician Marcus du Sautoy in conversation with Rowan Hooper (Managing Editor, *New Scientist*).

Free admission, no ticket required



**THU 05 OCT // 1.15pm**  
// RNCM Concert Hall

## RNCM CONCERT ORCHESTRA

**Gioachino Rossini** The Barber of Seville: Overture

**W A Mozart** Symphony No 31 in D major K 297 'Paris'

**Clark Rundell, Diogo Costa** conductors

Free admission, no ticket required



12pm

// Forman Lecture Theatre

### PRE-CONCERT TALK

Professor Martin Harlow explores how Mozart responded to the tastes and listening habits of his Parisian audience when composing the 'Paris' Symphony.

Free admission, no ticket required

RNCM  
ENGAGE



**FRI 06 OCT // Doors 7.30pm**  
// RNCM Theatre

## GAS

Germany's Wolfgang Voigt is easily one of techno's most prolific, influential and revered figures but he's received his greatest acclaim for his ambient techno recordings under the moniker GAS.

GAS is the vision of a sonic body between Schoenberg and Kraftwerk, between French horn and bass drum. GAS is Wagner goes glam rock, and Hansel and Gretel on acid. GAS is there to take you on a seemingly endless march through the under woods - and into the discotheque - of an imaginary, nebulous forest.

In his music, Voigt does not create a direct reference to the original sounds or even the forest itself. He rather tries to reduce the "material" to its basic structure by using different zoom, loop and alienation techniques in order to release it from its original meaning and context. His intention is to create a kind of aesthetic essence, a cave (detail/loop/repetition) where you can get lost.

Tickets £17.50

No concessions

Promoted by Grey Lantern

**FRI 06 OCT // 7.30pm**

// RNCM Concert Hall

## MANCHESTER LITERATURE FESTIVAL

### HOW TO BE CHAMPION: AN EVENING WITH SARAH MILLICAN

Manchester Literature Festival is delighted to launch this year's Festival with a special in conversation with much-loved comedian, broadcaster and now author, Sarah Millican. Join us to hear Sarah chatting about her debut book, *How to be Champion*, and sharing funny stories and proper advice on how to get past life's blips - like being good at school but not good at friends, the excitement of IBS and how to blossom post-divorce. If you've ever worn glasses at the age of six, worn an off-the-shoulder gown with no confidence, been contacted by an old school bully, lived in your childhood bedroom in your 30s, been gloriously dumped in a Frankie and Benny's, cried so much you felt great, been for a romantic walk with a dog, worn leggings two days in a row even though they smelt of wee from a distance, then this is YOUR BOOK. If you haven't done those things but wish you had, THIS IS YOUR BOOK. If you just want to laugh on a train/sofa/toilet or under your desk at work, THIS IS YOUR BOOK.

This event will be chaired by poet and comedian Kate Fox.

PS Read about our other MLF events on p14/15

Tickets £12

Ticket and a copy of *How to be Champion* £28

Promoted by Manchester Literature Festival



**SUN 08 OCT // 8pm**  
// RNCM Concert Hall

## MAGIC VOICES IN CONCERT

Magic Voices returns to the RNCM to perform songs from shows and movies, showcasing the talents of the choir and guest soloists.

Tickets £20

No concessions

Promoted by Magic Voices Ltd

**MON 09 OCT // 1.15pm**  
// RNCM Concert Hall

## MONDAY RECITAL SERIES

**J S Bach** Selections from Cello Suite No 3 in C major BWV 1009

**Joseph Dawson** cello

**Léonin Viderunt** Omnes No 2 'Notum fecit Dominus salutare suum'

**Francis Poulenc** Sonata for clarinet and bassoon

**Anon** Factum est salutare

**Anon** Two-part clausula

**Isobel Mortimer** clarinet

**Eleanor Mills** bassoon

Free admission, no ticket required

**MON 09 OCT // 7.30pm**  
// RNCM Concert Hall

## MANCHESTER CHAMBER CONCERTS SOCIETY GOULD PIANO TRIO

**Ludwig van Beethoven** Piano Trio in G major Op 1 No 2

**Mark Simpson** After Avedon

**Felix Mendelssohn** Piano Trio No 1 in D minor Op 49

Tickets £25, platform seats £12.50

Promoted by MCCS



6.30pm

// Forman Lecture Theatre

### PRE-CONCERT TALK

Free admission to ticket holders

**WED 11 OCT // From 6.30pm**  
// Carole Nash Recital Room

## SPOTLIGHT DOUBLE-BILL

Students from the RNCM perform two short concerts which they have programmed themselves, each with a French theme.

6.30pm

### Les enfants de Raguene

- French Baroque music from Charpentier to Couperin

7.10pm

**Always French** - Music for wind quintet and piano

Free admission, no ticket required

**THU 12 OCT // 1.15pm**  
// RNCM Concert Hall

## RNCM SINFONIETTA

**Maurice Ravel** Introduction and Allegro

**Maurice Ravel** Trois Poèmes de Stephane Mallarmé

**Mark Heron, Orr Guy** conductors

**Lucy Vallis** mezzo-soprano

Free admission, no ticket required

**TUE 10 OCT // Doors 7pm**  
// RNCM Theatre

## MARTY STUART AND HIS FABULOUS SUPERLATIVES

For over 40 years, Marty Stuart, a five-time Grammy Award-winning multi-instrumentalist, singer, songwriter, photographer and historian, has been building a rich legacy in country music. On his latest release, *Saturday Night & Sunday Morning*, he captures all the authentic neon and stained-glass hues of country music - from love and sex to heartache and hardship to family and God.

Tickets £28.50

No concessions

Promoted by SJM Concerts



**THU 12 OCT // 7.30pm**  
// RNCM Concert Hall

## BRAND NEW ORCHESTRA

**Sergej Bolkhovets, Alex Robinson, Alex Webb** conductors

Our Brand New Orchestra concerts provide a fascinating insight into the process of composing, conducting and performing at the RNCM. This musical pick'n'mix is a wonderful showcase for our Composition students and a chance to hear brand new pieces before they are performed anywhere else. And for the first time this term, our BNO concert will feature a professional guest leader - Benedict Holland (Psappha, Sinfonia Viva) - to perform alongside our students. The last BNO event featured a student playing a trumpet in the bath. So you're never quite sure what you're going to witness on stage...

Free admission, no ticket required

**SAT 14 OCT // 12.30pm**  
// RNCM Concert Hall

## JUNIOR RNCM FORMAL CONCERT

A showcase performance featuring talented soloists from Junior RNCM.

Free admission, no ticket required

**SAT 14 OCT // 8pm**  
// RNCM Concert Hall

## RALPH MCTELL

Best known for his international hit, *Streets of London*, Ralph McTell has been a stalwart of the British acoustic music scene for over 50 years with a career that has spanned street-busking across Europe to solo shows at the Royal Albert Hall, Carnegie Hall and The Sydney Opera House.

Tonight's gig features songs from McTell's impressive catalogue including material from his forthcoming album *West 4th Street and Jones*.

Tickets £27.50

Promoted by AAA Entertainment

**SUN 15 OCT // 7pm**  
// RNCM Theatre

## TAMED: WITH PROFESSOR ALICE ROBERTS

How do you tame wildness? Join Alice Roberts as she delves into archaeology, history and genetics to reveal the amazing stories of the species that became our allies. From dogs, cattle and horses to wheat, potatoes and apples, find out how taming all these species has left its mark on them - and us.

Tickets £19.50

Promoted by Jo Sarsby Management





**SUN 15 OCT // 2pm**  
 // RNCM Concert Hall

## RNCM YOUNG EXPLORERS CONCERT PETER AND PADDINGTON

**Herbert Chappell** Paddington Bear's First Concert  
**Stephen McNeff** Beatrix Potter's Peter Rabbit and his Friends in the Orchestra  
**Piccadilly Symphony Orchestra**  
**Tom Newall** conductor

For the latest in our RNCM Young Explorers Series, we're celebrating children's classics with some of the best characters around. Paddington Bear and Peter Rabbit will be making an appearance and our own Young Explorers mascot, Phileas Fox, will be back from his travels to say hello! In these circumstances, dressing up as your favourite children's character is very much encouraged...

Our Young Explorers concerts are a brilliant way to introduce children to family-friendly relaxed performances, specially designed to keep everyone engaged and amused.

For full details please see [www.rncm.ac.uk/youngexplorers](http://www.rncm.ac.uk/youngexplorers)  
 Suitable for ages 3 and above

Tickets £12, under-16s £6 Family ticket (4 people) £30

RNCM  
 ENGAGE

**MON 16 OCT // 1.15pm**  
 // RNCM Concert Hall

## MONDAY RECITAL SERIES

**Tom Cipullo** Of a Certain Age

**Fiona Finsbury** soprano

**Olivia Dance** piano

**Andy Scott** Three Letter Word

**Dave Heath** Coltrane

**Isabel Pattuzzi** saxophone

Free admission, no ticket required

**MON 16 OCT // 8pm**  
 // RNCM Concert Hall

## THE PIETÀ STARRING FRANCES BARBER WITH THE STAMFORD ORCHESTRA

**Frances Barber** narrator

**Claire O'Brien** soprano

**Jessica Mogridge** cor anglais

Olivier Award nominated actor Frances Barber brings to life the role of a woman devastated by the loss of her son to street crime in Shane Cullinan's critically-acclaimed orchestral drama.

*The Pietà* portrays a mother's raw emotions through her own words; the piece is inspired by Michelangelo's statue of the moment when Christ's body was placed in his mother's arms but relocates it to a modern-day Manchester.

Tickets £20

Promoted by Cayos Music

**TUE 17 OCT // 7.30pm**  
 // RNCM Concert Hall

## VOCES8 CHORAL DANCES

Programme to include:

**William Byrd** Laudibus in Sanctis

**Benjamin Britten** Choral Dances from *Gloriana*

**Nat 'King' Cole (arr Clements)** Straighten Up and Fly Right

**Paul Simon/Art Garfunkel (arr L'Estrange)** The Sound of Silence

**Claude Debussy** Trois chansons de Charles d'Orléans

**J S Bach (arr Ward Swingle)** Bouree

**Francis Poulenc** Chansons Francaises

**Justin Bieber (arr Clements)** Beautiful

**Duke Ellington (arr Parry)** It Don't Mean a Thing

The members of the ensemble VOCES8 are in their 20s and 30s and bring a completely fresh approach to a cappella singing.

In tonight's programme, they explore an incredibly diverse collection of choral music inspired by dance. You'll hear unusual arrangements of songs by writers ranging from William Byrd and Benjamin Britten, to Duke Ellington and Van Morrison, to Simon and Garfunkel and even Justin Bieber!

Signed to the Decca label, the group has been enjoying lots of radio exposure and we're particularly excited as soprano Eleonore Cockerham has recently joined the line-up straight from finishing her studies at the RNCM. So please come along to help us to cheer her on!

### SPECIAL UNDER 18s TICKET OFFER

If you are under 18, pay just £5 for your VOCES8 tickets

Tickets £18 £15



**WED 18 OCT // 4.15pm**  
// Carole Nash Recital Room

## MICHAEL KENNEDY INTERNATIONAL RESEARCH LECTURE

Professor Denis Herlin, RNCM International Chair in Musicology, sheds new light on Debussy's early songs, followed by a short recital.

Free admission, no ticket required

**THU 19 OCT // 1.15pm**  
// RNCM Concert Hall

## RNCM BRASS BAND

**Elgar Howarth** Music from the Elizabethan Court

**Daniel Lim** Red Tide (world première)

**George Lloyd** Diversions on a Bass Theme

**David Thornton, Peter Woffenden** conductors

Free admission, no ticket required

**THU 19 OCT // 7.30pm**  
// RNCM Concert Hall

## BENJAMIN GROSVENOR (piano)

**J S Bach** French Suite No 5

**Johannes Brahms** Piano Pieces Op 119

**Brett Dean** Hommage à Brahms

**Claude Debussy (arr Borwick/Copeland)** Prélude à l'après-midi d'un faune

**Alban Berg** Piano Sonata Op 1

**Maurice Ravel** Gaspard de la nuit

Benjamin Grosvenor makes his RNCM début as part of our *French Connections* series. Still just 25 years old, this exciting young artist was propelled into the limelight when he won the Keyboard Final of BBC Young Musician of the Year in 2004, aged 11. He is a regular fixture on BBC Radio 3 and was the youngest artist (and the first British pianist) in 60 years to sign with Decca.

Grosvenor is known for his electrifying performances and the depth and understanding of his musicianship: *'he is a Romantic pianist, almost from another age. He doesn't deconstruct, or stand at a distance. He jumps inside the music's soul'*. (The Times)

Tickets £18 £15



6.30pm

// Carole Nash Recital Room

**SPOTLIGHT: Moments of Reflection** – Masterpieces for violin-cello duo by Ravel and Glière

Free admission, no ticket required



**FRI 20 OCT // 7.30pm**  
// RNCM Theatre

## UTE LEMPER

### LAST TANGO IN BERLIN – THE BEST OF UTE

Following her extraordinary performance in 2012, the legendary chanteuse Ute Lemper returns to our stage with her celebrated show *Last Tango in Berlin – The Best of Ute*.

The journey starts in Berlin with Ute's core repertoire of Brecht and Weill and the Berlin Cabaret songs, then continues into the poetic universe of the French chansons of Brel, Piaf, Ferre and further afield to the Argentinian world of Tango by Astor Piazzolla. She walks through the backstreets of Paris, Berlin, New York and Buenos Aires and tells the stories of the lost, of love, survival, passion, dreams, societies, the past and the future.

*'She takes her place centre stage, and owns it...'*  
The Guardian

Tickets £32.50 £27.50



6.30pm

// Studio One

**SPOTLIGHT: Morpion by Bella Moth** – A musical exploration into the theme of duality

Free admission, no ticket required

**FRI 20 OCT // 7.30pm**  
// Carole Nash Recital Room

## VIOLIN MASTERCLASS WITH JAMES EHNES

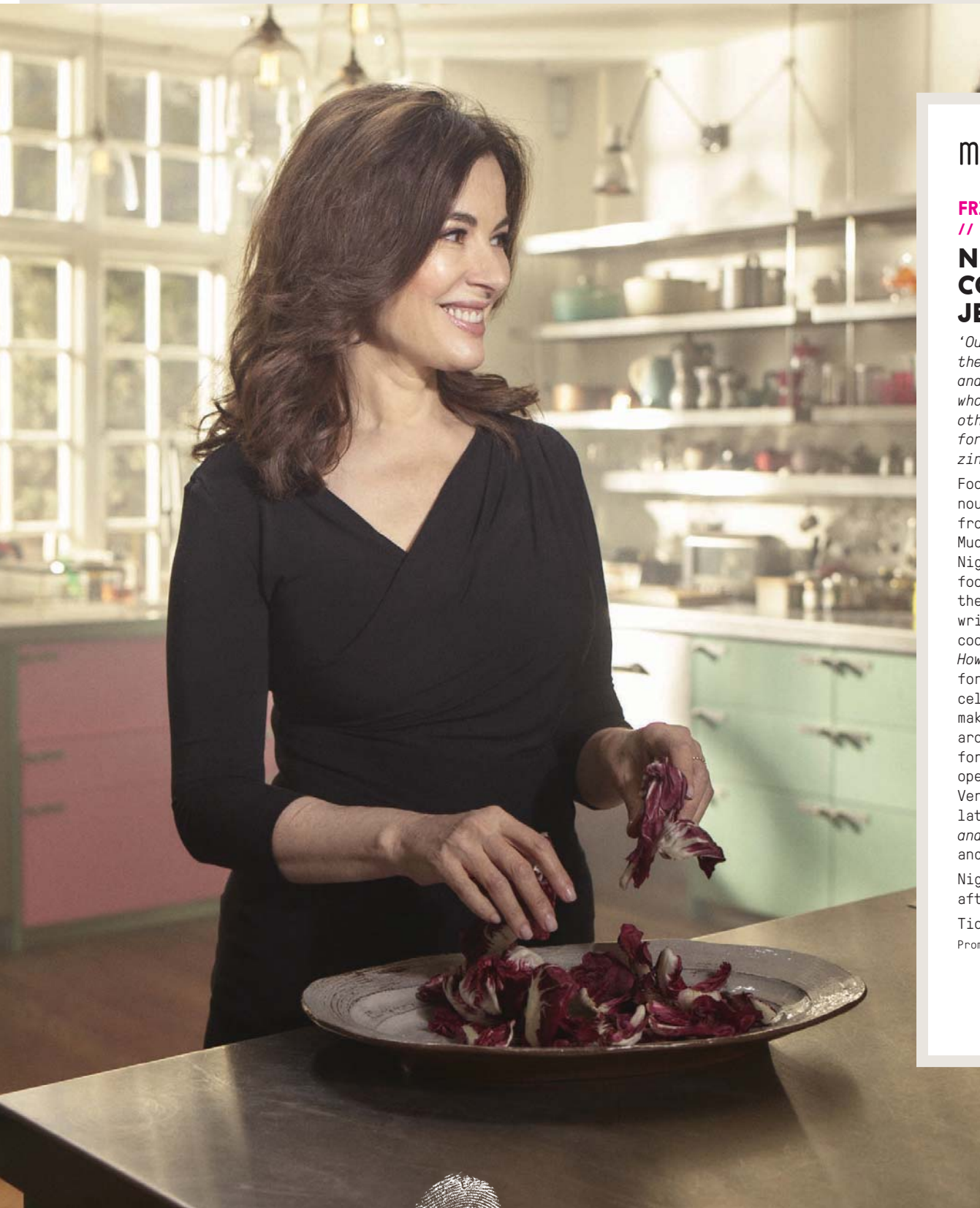
### CHRISTOPHER ROWLAND INTERNATIONAL MASTERCLASS

A chance to witness the creative process up close as violinist James Ehnes works with our students to develop their understanding of the music chosen for this public masterclass.

Tickets £8

Supported by the Christopher Rowland International Masterclass Fund





## manchester literature festival

**FRI 20 OCT // 7pm**  
// RNCM Concert Hall

### **NIGELLA LAWSON IN CONVERSATION WITH JEANETTE WINTERSON**

*'Our lives are formed by memories, and the focus of mine is the food I've cooked and the people I've cooked for, the people who have sat at my table, as well as the other tables I've eaten on, from the blue formica of my childhood, to the mottled zinc that is the nexus of my life now.'*

Food is much more than human fuel - it nourishes our spirits, and is inseparable from our ideas of home and belonging. Much-loved food writer and television cook Nigella Lawson joins author and fellow food lover Jeanette Winterson to discuss the pleasures of cooking, eating and writing. The author of ten best-selling cookery books including *How To Eat* and *How To Be A Domestic Goddess*, Nigella's forthcoming *At My Table* is a delicious celebration of home cooking, the food that makes people happy and welcome as they sit around your table. A passionate advocate for organic food and slow eating, Jeanette opened her own deli and grocery store Verde & Co in Spitalfields in 2006 and her latest book, *Christmas Days: 12 Stories and 12 Feasts*, includes both short stories and favourite recipes.

Nigella will sign copies of *At My Table* after the event.

Tickets £17

Promoted by Manchester Literature Festival

**WED 25 OCT // 7.30pm**  
// RNCM Concert Hall

### **AN EVENING WITH ARMISTEAD MAUPIN**

Manchester Literature Festival are thrilled to present a special event with beloved and critically-acclaimed American author Armistead Maupin. One of our most distinctive story-tellers, Maupin is the author of *The Night Listener*, *Maybe The Moon*, *Michael Tolliver Lives*, *Mary Ann in Autumn* and the best-selling *Tales of the City* series. A charming and engaging raconteur, Maupin will be talking about his long-awaited memoir, *Logical Family*, chronicling his odyssey from the old South to free-wheeling San Francisco, and his evolution from curious youth to groundbreaking writer and gay rights pioneer.

*'A book for any of us, gay or straight, who have had to find our family. Maupin is one of America's finest storytellers, and the story of his life is a story as fascinating, as delightful and as compulsive as any of the tales he has made up for us.'* Neil Gaiman

Tickets £12

Ticket and a copy of *Logical Family: A Memoir* £29

Promoted by Manchester Literature Festival

### **STOP PRESS!**

**FRI 06 OCT // 7.30pm**  
// RNCM Concert Hall

### **HOW TO BE CHAMPION: AN EVENING WITH SARAH MILLICAN**

Please see p7 for full details



**SAT 21 OCT // 7.30pm**  
// RNCM Concert Hall

## GORTON PHILHARMONIC

**Carl Orff** Carmina Burana  
**Ludwig van Beethoven** Choral  
Fantasy in C minor Op 80  
**Dmitri Shostakovich** Festive  
Overture Op 96

**Bury Choral Society**  
**The Brixii Singers**  
**Juan Ortuño** conductor

Tickets £12  
Promoted by Gorton Philharmonic  
Society

**MON 23 OCT // 1.15pm**  
// RNCM Concert Hall

## MONDAY RECITAL SERIES

**Claude Debussy** Piano Trio in  
G major (3rd movement)  
**Joseph Haydn** Piano Trio  
in C major Hob XV:27 (1st  
movement)

**Larisa Trio:**  
**Eliette Harris** violin  
**Rosie Spinks** cello  
**Jasmin Allpress** piano

**Claude Debussy** Marche  
écossaise sur un thème  
populaire  
**Francis Poulenc** Sonata for  
piano four hands

**Louis Perera, Fruzsina Szűcs**  
piano

Free admission, no ticket  
required

**THU 26 OCT // 1.15pm**  
// RNCM Concert Hall

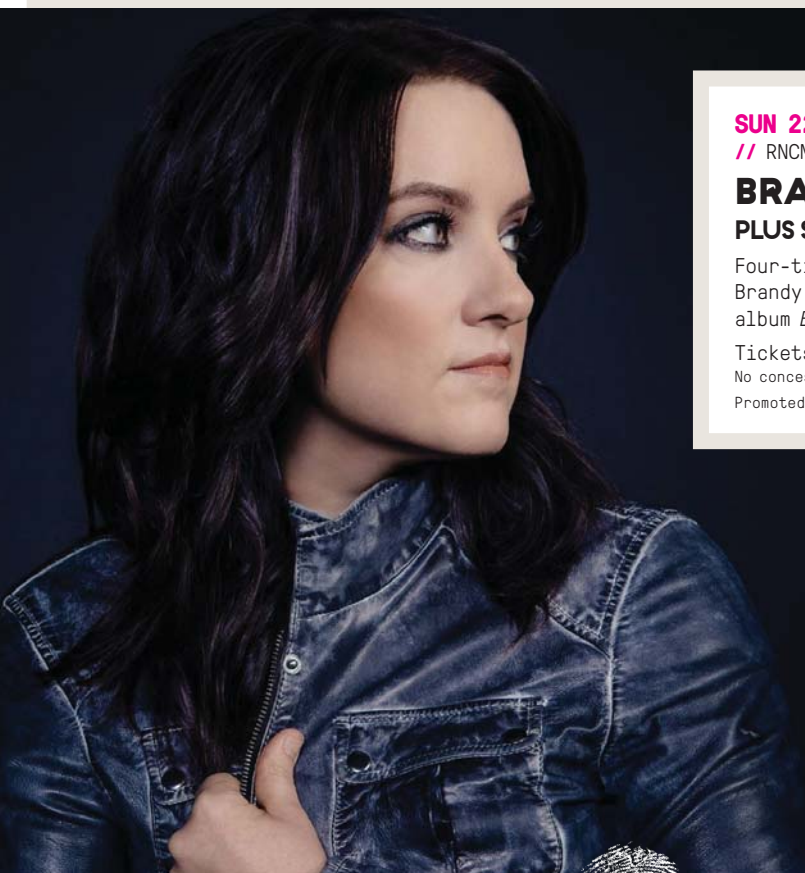
## RNCM WIND ENSEMBLE

**Joseph Haydn (arr D Smith)**  
Harmoniemusik in F major  
XI:26

**Maurice Ravel** Pavane pour une  
infante défunte

**Eugene Goossens** Fantasy Op 36  
**Laura Jellicoe, Melvin Tay**  
conductors

Free admission, no ticket  
required



**SUN 22 OCT // Doors 7pm**  
// RNCM Theatre

## BRANDY CLARK PLUS SPECIAL GUESTS

Four-time Grammy Award nominee  
Brandy Clark showcases her new  
album *Big Day In A Small Town*.

Tickets £22.50 advance  
No concessions  
Promoted by SJM Concerts



**SAT 28 OCT // Doors 7pm**  
// RNCM Concert Hall

## AN EVENING WITH FOY VANCE

Foy Vance's latest album *The Wild Swan* was released  
on Ed Sheeran's label Gingerbread Man Records.  
For this intimate show, he'll be performing solo,  
greeting audiences with only a piano, guitar and  
his incredible vocals.

*'Equal parts Van Morrison and Ray LaMontagne,  
Vance is in possession of one of music's most  
remarkable voices'* \*\*\*\*\* Evening Standard

Tickets £17.50 advance  
No concessions  
Promoted by Kilimanjaro Live and Communion

**SAT 28 OCT // 7pm**  
// RNCM Theatre

## RNCM SESSION ORCHESTRA

### + SUPPORT

**Andy Stott** *director*

Once again, it's time for the RNCM Session Orchestra to cut loose on our Theatre stage. This 40-piece ensemble plays a pivotal role in bringing together students from both our classical and popular music degree programmes, providing them with industry standard training and professional performance opportunities.

For this Autumn date, there are some new names in the mix - you'll be able to hear tunes by Vulfpeck and Gretchen Parlato, as well as nods to Michael Jackson, Ed Sheeran, Amy Winehouse, Take That and many more...

Our Session Orchestra gigs are also an amazing showcase for other student groups and tonight's support will be on stage at 7pm, with the Session Orchestra starting their set at 8pm.

Tickets £15



**MON 30 OCT // 1.15pm**  
// RNCM Concert Hall

## MONDAY RECITAL SERIES

**Victor Ewald** Quintet No 2 in E flat major Op 6

**All Saints Brass:**  
**Daniel Tarrant, Bethan Plant** *trumpet*  
**Sophie Bell** *horn*  
**Miri Wallich** *trombone*  
**Josh Allen** *tuba*

**Lizzie Brightwell-Gibbons** *New work*

**Owen Condon** *Fractal*  
**Steven Whibley** *Monsoon*

**Lizzie Brightwell-Gibbons,**  
**Alex Smith, Aidan Marsden,**  
**Andre Nadais** *percussion*

Free admission, no ticket required

**MON 30 OCT // 7.30pm**  
// RNCM Concert Hall

## MANCHESTER CHAMBER CONCERTS SOCIETY LEIPZIG STRING QUARTET

**Joseph Haydn** String Quartet Op 1 No 4 in G major Hob III:4  
**Anton Webern** String Quartet (1905)

**W A Mozart** String Quartet No 13 in D minor K 173  
**Dmitri Shostakovich** String Quartet No 1 in C major Op 49

Tickets £25, platform seats £12.50

Promoted by MCCC

**TUE 31 OCT // 7pm**  
// Carole Nash Recital Room

## ROYAL OVER-SEAS LEAGUE SHOWCASE

**Domenico Scarlatti** Sonata in A minor K 175

**György Ligeti** Études Book 2 Nos 8, 11 and 13

**Dominic Degavino** *piano*

**Sally Beamish** *Albatross*

**Astor Piazzolla** *Fugata*

**Astor Piazzolla** *Oblivion*

**Huw Wiggin** *saxophone*

**James Sherlock** *piano*

**Robert Schumann** Adagio and Allegro in A flat major Op 70

**Reinhold Glière** Prélude and Scherzo Op 32

**Toby Hughes** *double bass*

**Benjamin Powell** *piano*

In case you haven't heard of the Royal Over-Seas League, it is a non-profit organisation that helps artists and musicians across the Commonwealth to connect, collaborate and create. Tonight's concert showcases recent winners of the ROSL Annual Music Competition, who are all current students or alumni of the RNCM.

Tickets £8 (includes free FS glass of wine after concert)  
Promoted by RNCM in association with Royal Over-Seas League

**THU 02 NOV // 1.15pm**  
// RNCM Concert Hall

## RNCM SINFONIETTA

**Jinjun Lee** *Cacophony of the Animals* (world première)

**Camille Saint-Saëns** *The Carnival of the Animals*

**Mark Heron, Tjeerd Barkmeijer,**  
**Alex Robinson** *conductors*

Free admission, no ticket required

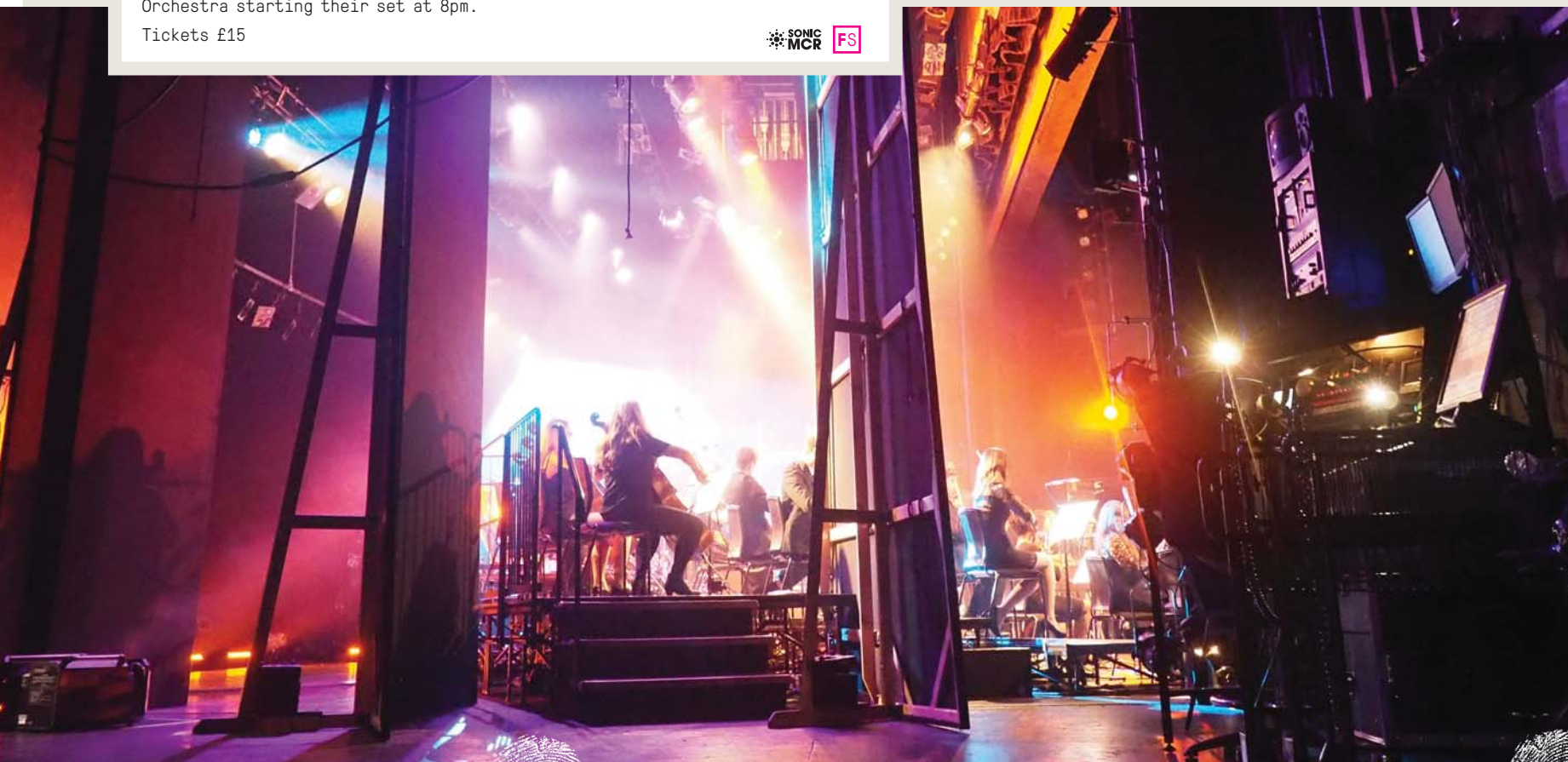


PHOTO: Alex Smith RNCM Photographic Society

WED 01 NOV // 7.30pm  
// RNCM Theatre

## RNCM BIG BAND WITH CHRISTIAN GARRICK AND TINA MAY A HOT NIGHT IN PARIS

Mike Hall *director*  
Christian Garrick *violin*  
Tina May *voice*

Our *French Connections* odyssey continues when the RNCM Big Band conjures up a hot night in Paris with a couple of special guests who are no strangers to our Big Band audience. Tina May will pay tribute to Édith Piaf and has a couple of other surprises up her sleeve, including a lovely version of *Autumn Leaves* arranged by Colin Towns (which she will sing in French).

Christian Garrick will be joining RNCM guitarist James Girling to play a couple of Hot Club de France tunes and the Band will also play some songs from the album *A Hot Night in Paris* by the Phil Collins Big Band. Throw in *April in Paris* and the odd Michel Legrand classic and you get the picture...

Tickets £18 £15



THU 02 NOV // 7.30pm  
// Carole Nash Recital Room

## A RECITAL OF ENGLISH SONG

Whilst ranging from the timeless delights of Tallis and Byrd to the power and drama of Howells and Britten, the focal point of the English Music Festival is the early 20th century - the Golden Renaissance of English music. As well as commissioning thrilling but accessible new works in the English tradition, the EMF is devoted to keeping important works by major British composers in the repertoire, and to resurrecting the many forgotten gems by a host of lesser-known composers.

Tonight's recital features RNCM students performing examples of English song.

Tickets £15  
No concessions  
Promoted by English Music Festival

FRI 03 NOV // 7.30pm  
// RNCM Theatre

## EUROPEAN OUTDOOR FILM TOUR 2017/18

THIS IS REAL: the biggest film festival of the European outdoor community. With the best outdoor sports and adventure films of the year, it shows the true stories of people who leave their comfort zone far behind, in order to explore their personal limits again and again - whether under the hot sun of the desert or in icy crevasses. This year's programme consists of nine short films and documentaries.

Tickets £12 advance,  
available from  
[www.eoft.eu/tickets](http://www.eoft.eu/tickets)  
Promoted by European Outdoor Film Tour

SAT 04 NOV // 7.30pm  
// RNCM Concert Hall

## KAYHAN KALHOR AND TOUMANI DIABATÉ

The Iranian Kamanche virtuoso Kayhan Kalhor is one of the best-known exponents of Persian and Kurdish music in the world. He has performed with the legendary Persian singers Mohammad Reza Shajarian and Shahram Nazeri and is known to international audiences through his work with Yo-Yo Ma, the New York Philharmonic Orchestra and Francis Ford Coppola.

Toumani Diabaté comes from an ancient Griot family, who claim to be able to trace their ancestry back 70 generations. He learned to play the Kora from his father Sidiki Diabaté and now often performs with his own son, also named Sidiki. Toumani is recognised as one of the most influential musicians from West Africa and just like Kayhan Kalhor, has sought out musicians with other styles, including Björk, the flamenco band Ketama and American jazz trombonist Roswell Rudd.

Tickets £22



**FRI 03 NOV // 7.30pm**  
 // RNCM Concert Hall

## **RNCM SYMPHONY ORCHESTRA** **THE RITE OF SPRING**

**Olivier Messiaen** Les Offrandes oubliées  
**Bohuslav Martinů** Rhapsody-Concerto H 337  
**Igor Stravinsky** The Rite of Spring  
**Clark Rundell, Sergej Bolkhovets** conductors  
**Alexander Mitchell** *viola*

The next phase of *French Connections* explodes onto our Concert Hall stage in the shape of Stravinsky's visceral masterpiece. *The Rite of Spring* had the most notorious premiere in the history of modern music. On 29 May 1913, the Théâtre de Champ-Elysées erupted as the work proved such a violent wrench from every musical tradition that had gone before it. With its many complex technical innovations, the level of dissonance moved the audience far away from its comfort zone - there were cat calls, fist-fights and screams of abuse so loud that the dancers were unable to hear the orchestra. One critic said: '*the music always goes to the note next to the one you expect...*' The score can be seen as cubist, as musical materials slice into one another, interact and superimpose with the most brutal edges, thus challenging the musical perspective and Logic that had dominated European ears for centuries.

This programme also features Messiaen's religious triptych, written when the composer was just 22 years old and a recent graduate of the

Paris Conservatoire. Although Debussy, Ravel and his teacher Paul Dukas did leave a lasting impression on the young Messiaen, he had a completely independent spirit and evolved as a new kind of French composer.

And the Paris connections continue into tonight's remaining piece. During his first years in the city, Martinů incorporated many of the trends at the time, including jazz and surrealism, but he was particularly drawn to the angular, propulsive rhythms and sonorities of Stravinsky. His Rhapsody-Concerto was written in 1952, when he was fighting homesickness and depression, worsened by the political situation in his native Czechoslovakia.

To celebrate the launch of *French Connections*, we are offering everyone a special capped ticket price of just £5 for this concert.

Tickets £5  
 No concessions



6.30pm  
 // Forman Lecture Theatre

### **PRE-CONCERT TALK**

Dr David Horne explores *The Rite of Spring*'s traditional folk influences contrasted with its radical musical language, in this illustrated talk with performance.

Free admission, no ticket required

RNCM  
 ENGAGE

SUN 05 NOV

## RNCM SAXOPHONE DAY

One of the most popular events we stage here during the year, RNCM Saxophone Day is the UK's largest annual sax gathering. We throw open our doors and welcome players of all ages and abilities and present a day jam-packed with participatory workshops and concerts.

As is tradition, we kick off the proceedings - and give everyone the chance to play - with the now legendary Massed Saxophone Orchestra. This year there is also a concert by sax 'supergroup' Group S featuring John Helliwell (Supertramp), Simon Willecroft (Duran Duran) and the Apollo Saxophone Quartet, and an incredible rhythm section that features guest pianist Jason Rebello (Sting), Laurence Cottle and Elliot Henshaw. We're also delighted to welcome the internationally-renowned Timothy McAllister (pictured right), following his reprisal of John Adams' *City Noir* with Gustav Dudamel and the Berlin Philharmonic this Summer.

For full details, please see [www.rncm.ac.uk/saxophoneday](http://www.rncm.ac.uk/saxophoneday)

To include:

2.15pm

// RNCM Concert Hall

### TIMOTHY McALLISTER

Hailed as a '*virtuoso...one of the foremost saxophonists of his generation*' by The New York Times, Timothy McAllister performs a solo set of contemporary masterworks in this exciting, innovative recital.

Tickets £10

7pm

// RNCM Theatre

### ANDY SCOTT + GROUP S

Andy Scott + Group S will perform a selection of music from its recently-released CD (Basho Records) *Ruby & All Things Purple*, providing an explosive and thought-provoking finale to the RNCM Saxophone Day!

**Andy Scott** *tenor saxophone*

**Rob Buckland** *sopranino/soprano saxophones*

**Krzysztof Urbanski** *soprano saxophone*

**Simon Willecroft** *alto/soprano saxophones*

**Dave Graham** *alto saxophone*

**Mike Hall** *tenor saxophone*

**John Helliwell** *tenor saxophone*

**Carl Raven** *tenor/baritone saxophones*

**Chris Caldwell** *baritone saxophone*

**Jim Fieldhouse** *bass/baritone saxophones*

**Jason Rebello** *piano*

**James Pusey** *guitar*

**Laurence Cottle** *bass guitar*

**Elliot Henshaw** *drums*

Tickets £15

Full Day Ticket £34

Student/Under 18s £17

Sponsored by Henri Selmer Paris and Vandoren





**TUE 07 NOV //** Doors 7pm  
// RNCM Concert Hall

## **NEWTON FAULKNER**

### **PLUS SPECIAL GUESTS**

Newton Faulkner is a different proposition, and his audacious new album, *Human Love*, is a colourful statement of intent. His fifth studio collection, it is an alluring maelstrom of rhythm and harmony. Embracing racing drums, African percussion, chanted choruses, ambient interludes and the most imposing hooks of his career to date, it combines a more forthright writing style with a greater emphasis on beats and texture.

Tickets £25 advance  
No concessions  
Promoted by SJM

**MON 06 NOV //** Doors 7pm  
// RNCM Concert Hall

## **LUCY ROSE**

### **PLUS SPECIAL GUESTS**

Tickets £15  
No concessions  
Promoted by SJM Concerts

**WED 08 NOV //** 2pm and 7pm  
// RNCM Theatre

## **RNCM CHILDREN'S OPERA PROJECT**

### **INTO THE UNDERWORLD**

**Kate Pearson** *composer*  
**RNCM Students**  
**Primary Schools from across the North West**

The RNCM Children's Opera project brings together 180 children aged 10 and 11 from Manchester primary schools to create and perform a new opera, guided by a professional composer and supported by RNCM musicians. This Autumn's production is based on Orpheus in the Underworld, a story of genius, loss and forbidden journeys, and the creative team will work with the children to create the opera, using their ideas to shape the music, the costumes and the set.

Free admission, by ticket only

**RNCM**  
**ENGAGE**

**THU 09 NOV //** Doors 7pm  
// RNCM Theatre

## **OYSTERBAND**

This multi-award-winning outfit is now entering its 40th year, as vital and creative as ever, with some of the finest songs in the modern folk canon to their name.

On this tour, a unique and fiercely independent career will be celebrated. The band will play two sets, one featuring their highly influential album *Holy Bandits* in its entirety, the second a selection of older gems from their vast back catalogue of songs, as well as some of the finest new songs in the modern folk repertoire.

Tickets £22 advance  
No concessions  
Promoted by Band on the Wall

**FRI 10 NOV //** Doors 7pm  
// RNCM Theatre

## **PORTICO QUARTET + SUPPORT**

A very welcome return for Mercury Prize-nominated Portico Quartet in their first RNCM show since 2012. One of the UK's most influential bands, Portico Quartet has always been an impossible band to pin down. Sending out echoes of jazz, electronica, ambient music and minimalism, the group have created their own singular, cinematic sound over the course of four albums, from their 2007 debut *Knee-Deep in the North Sea* to *Live/Remix* in 2013. Now rebooted as a quartet after a brief spell as the three-piece Portico, the group will perform material from their August Gondwana Records release, *Art In The Age Of Automation*, alongside back-catalogue favourites. Expect thumping hooks, ethereal saxophone, skittering drums, hypnotic minimalism and grooving bass lines from one of the best live bands around.

Duncan Bellamy plays drums and electronics, Milo Fitzpatrick bass, Keir Vine hang drums and keys, Jack Wyllie saxophone and keys.

Tickets £16 early bird  
No concessions  
Promoted by Gondwana Records



**SAT 11 NOV // 7.30pm**  
// RNCM Concert Hall

## HAMDEL ENSEMBLE

**SEYED ALI JABERI AND  
SINA SARLAK**  
**ALL BECAUSE OF LOVE**

This performance focuses on the life and work of the celebrated 13th century Persian poet Jalal ad-Din Muhammad Rumi, who rose to prominence among English-speaking readers following the publication of his translated works in the United States. He was hailed as the supreme poet of love and his collected works topped best-seller lists for poetry for several years.

These tales will be brought to life by musicians including tanbur player Seyed Ali Jaberri, whose most recent best-seller, *Psalms of Loneliness*, scored four stars in Songlines Magazine, and vocalist Sina Sarlak, an award-winning artist from Iran who has 30 albums under his belt.

Tickets £35 £25  
Promoted by Hamid Rezaie

**SAT 11 NOV // 5pm**  
**SUN 12 NOV // 10am**  
// RNCM Theatre

## BRITISH ASSOCIATION OF BARBERSHOP SINGERS

**QUARTET CONTEST 2017**

National Senior and Youth Quartets compete to qualify for a place in the National Championships which will be hosted in Harrogate on 25-28 May 2018. Plus new for this November, Mixed Voice National Quartet Championships.

Free admission, no ticket required

Promoted by British Association of Barbershop Singers

**SUN 12 NOV // 7pm**  
// RNCM Concert Hall

## OLDHAM CHORAL SOCIETY

**GREATER LOVE... A  
MUSICAL REFLECTION  
FOR REMEMBRANCE  
SUNDAY**

**Edward Elgar** The Spirit of England Op 80

**Dan Forrest** Requiem for the Living

**Hubert Parry** My soul, there is a country

**John Ireland** Greater love hath no man

**George Butterworth** The Banks of Green Willow

**Haydn Wood** Roses of Picardy

**Ivor Novello** Keep the Home Fires Burning

**East Lancashire Sinfonia**

**Nigel P Wilkinson** *conductor*

**Camilla Roberts** *soprano*

Tickets £15

Promoted by Oldham Choral Society



**MON 13 NOV // 1.15pm**  
// RNCM Concert Hall

## MONDAY RECITAL SERIES

New commissions by RNCM composers Philip Rousiamanis, Dennis Tjiok, Sebastian Winter and Matt Eden, alongside premières by composers from Birmingham Conservatoire.

**Carnelian Saxophone Quartet:**

**Grace Juliet Macdonald, Lily Wilson-Caines,  
Freya Chambers, Simeon Evans**

Part of New Music North West. See p30/31 for details.

Free admission, no ticket required



**MON 13 NOV // 7.30pm**  
// RNCM Theatre

## SABA DOUGLAS-HAMILTON A LIFE WITH ELEPHANTS

Join Saba Douglas-Hamilton, the highly-acclaimed elephant conservationist and wildlife TV presenter of *This Wild Life* and *Big Cat Diaries* for an evening of exciting animal stories and intimate behind the scenes tales of life in Kenya with her young family.

Tickets £19.50

Promoted by Jo Sarsby Management



**MON 13 – SAT 18 NOV**

## **NEW MUSIC NORTH WEST**

IS EXPERIMENTAL AND THOUGHT-PROVOKING.

50+ COMPOSERS, 20+ CONCERTS, 20+ PREMIÈRES TAKING PLACE RIGHT ACROSS MANCHESTER AND SALFORD.

A SHOWCASE FOR NORTH WEST-BASED COLLECTIVES AND STUDENTS, MIXING UP MUSICAL GENRES. MANY EVENTS ARE FREE.

MARK-ANTHONY TURNAGE IS IN RESIDENCE AND THERE'S A PREMIÈRE OF A MAJOR NEW OPERA BY ALAN WILLIAMS AND IAN MACMILLAN, THE FIRST EVER WRITTEN FOR NORTHERN ACCENTS.

**MARK-ANTHONY TURNAGE** // CARNELIAN SAXOPHONE QUARTET // **RNCM** // MANTIS (MANCHESTER THEATRE IN SOUND) // **HOUSE OF**

**BEDLAM** // MARTIN HARRIS CENTRE FOR MUSIC AND DRAMA // **TRIO ATEM** // VIRTUALLYREALITY // KINETIC + FRIENDS // **BBC**

**PHILHARMONIC** // UNIVERSITY OF SALFORD // **PSAPPHA** // **ALMOST CREDIBLE MUSIC (ACM)** // ROB BUCKLAND // RNCM NEW ENSEMBLE

// SHOAL – MANCHESTER SOUND ART COLLECTIVE // MEDIACITYUK // SILVIA LUCAS // **EBONIT SAXOPHONE QUARTET** // AD SOLEM

// **VONNEGUT COLLECTIVE + ANIMIKII** // RNCM WIND ORCHESTRA // MANCHESTER UNIVERSITY MUSIC SOCIETY (MUMS) // ST ANN'S

CHURCH // CoMA MANCHESTER // CHETHAM'S CONTEMPORARY MUSIC ENSEMBLE // CHETHAM'S SCHOOL OF MUSIC // **THE ARSONISTS: A**

**TRAGI-COMIC OPERA ABOUT LOVE AND ECONOMICS** // STUDENTS FROM RNCM, JUNIOR RNCM, CHETHAM'S, UNIVERSITY OF MANCHESTER & UNIVERSITY OF SALFORD // ST MICHAEL'S, ANGOATS

FOR FULL DETAILS, PLEASE SEE [WWW.RNCM.AC.UK/NMNM17](http://WWW.RNCM.AC.UK/NMNM17)



**MON 20 NOV // 1.15pm**  
// RNCM Concert Hall

## MONDAY RECITAL SERIES

**Marc Mellits** Black  
**Hans Koolmees** Monster

**Freya Chambers** *bass clarinet*  
**Simeon Evans** *baritone saxophone*

**Igor Stravinsky** *Feu d'artifice*  
Op 4

**Igor Stravinsky** *Trois pièces faciles*

**Alfred Schnittke** *Hommage à Stravinsky, Prokofiev and Shostakovich*

**Matthew Lam, Jason Lam, Wyn Chan** *piano*

Free admission, no ticket required

**MON 20 NOV // 7.30pm**  
// RNCM Concert Hall

## MANCHESTER CHAMBER CONCERTS SOCIETY

### PAUL AND HUW WATKINS

**Cyril Scott** *Pastoral and Reel* for cello and piano

**Frederick Delius** *Sonata* for cello and piano

**Gabriel Fauré** *Sonata No 1 in D minor* for cello and piano  
Op 109

**Claude Debussy** *Sonata in D minor* for cello and piano  
L 135

**Nadia Boulanger** *Three Pieces* for cello and piano

**Anton Webern** *Sonata* for cello and piano

**Frank Bridge** *Sonata* for cello and piano H 125

Tickets £25, platform seats  
£12.50

Promoted by MCCS

**TUE 21 NOV // 7.30pm**  
// Carole Nash Recital Room

## THE HAWORTH BARBIROLI PRIZE FOR CELLO

Cello students from the RNCM compete for this prestigious prize.

Tickets £7

FS

**WED 22 NOV // 7.30pm**  
// RNCM Concert Hall

## MARIMBA MASTERCLASS WITH KEIKO ABE

A unique opportunity to observe master of the marimba Keiko Abe, as she works on repertoire with our percussion students in this public masterclass.

Tickets £8

Promoted by RNCM in association with Yamaha

**THU 23 NOV // 1.15pm**  
// RNCM Concert Hall

## RNCM PERCUSSION ENSEMBLE WITH KEIKO ABE (marimba)

**Keiko Abe** *Wind Sketch II* for two marimbas

**Keiko Abe** *Wind in the Bamboo Grove II* for two marimbas

**Keiko Abe** *Tambourin Paraphrase* for two marimbas

**Keiko Abe** *The WAVE Impressions II* for marimba ensemble and two percussionists

To kick off a wonderful, kinetic day of percussion activity in the College, we welcome Keiko Abe to perform her own compositions alongside some of our percussion students. She turns 80 this year and this is a rare opportunity to see this incredible player share the stage with our students.

Free admission, no ticket required

Promoted by RNCM in association with Yamaha

**THU 23 NOV // 7.30pm**  
// RNCM Concert Hall

## MUGENKYO TAIKO DRUMMERS

Experience the power of thundering rhythms on huge taiko drums, mysterious masked choreography, synchronisation timed to perfection, post-apocalyptic martial imagery and infectious humour – all in a spell-binding display of sheer energy.

As the most successful touring taiko drum group on this continent, Mugenkyo create a contemporary look and sound, fusing the traditional spirit of taiko with a modern stage performance that has captivated audiences everywhere...

Tickets £22

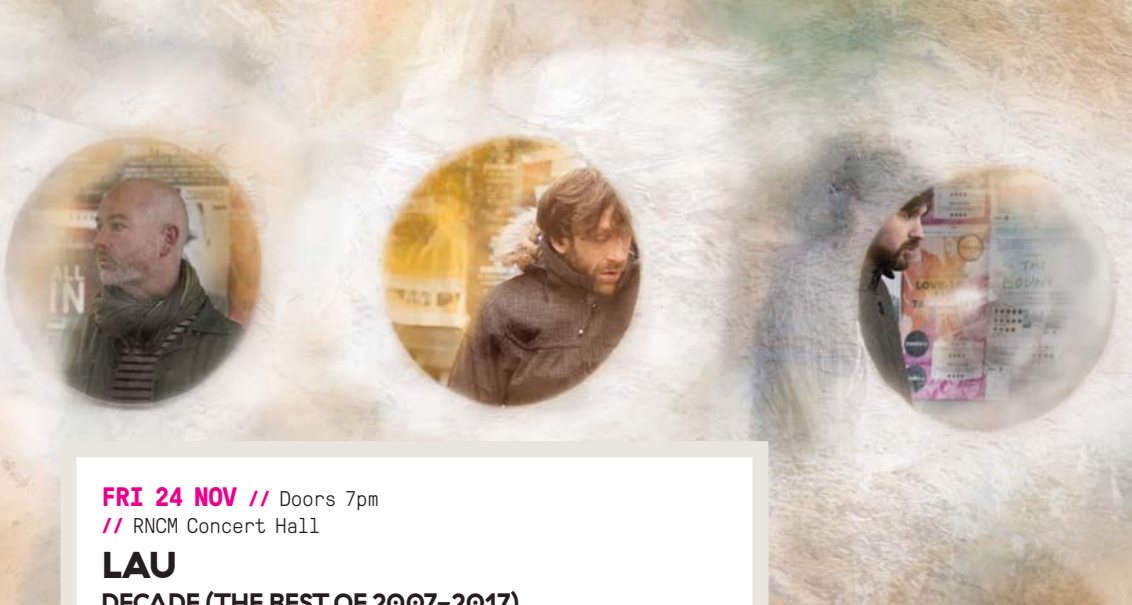
FS

+

6.30pm

// Carole Nash Recital Room

**SPOTLIGHT: Quercus Duo** – Music for cello and marimba  
Free admission, no ticket required



**FRI 24 NOV //** Doors 7pm  
// RNCM Concert Hall

**LAU**  
**DECADE (THE BEST OF 2007-2017)**

Lau is the pioneering contemporary folk trio comprising three of the UK's finest traditional musicians: Kris Drever (vocals, guitar), Martin Green (accordion, Wurlitzer, keys, electronics) and Aidan O'Rourke (fiddle).

Tonight they'll be playing material from their first ever retrospective album, *Decade*, a compilation of the trio's best tracks, curated by the band and manager Tom Rose from the song and tune suggestions of their very many fans.

Tickets £18.50 advance  
No concessions  
Promoted by Band on the Wall



6.30pm  
// Carole Nash Recital Room

**SPOTLIGHT: Leif Lidström Trio** - New music from Manchester

Free admission, no ticket required

**MON 27 NOV //** 1.15pm  
// RNCM Concert Hall

**MONDAY RECITAL SERIES**

**Benjamin Britten** Suite for harp Op 83

**Lucy Nolan** harp

**Carlos Salzedo** Pentacle Suite

**Chroma Harp Duo:**  
**Lucy Nolan, Rebecca McIlroy**

Free admission, no ticket required

**MON 27 NOV //** 2pm  
// Carole Nash Recital Room

**PIANO MASTERCLASS WITH JEAN-EFFLAM BAVOUZET**

A chance to witness the creative process up close as pianist Jean-Efflam Bavouzet works with our students to develop their understanding of the music chosen for this public masterclass.

Tickets £8



**THU 30 NOV //** 1.15pm  
// RNCM Concert Hall

**RNCM BAROQUE ENSEMBLE WITH RNCM CHAMBER CHOIR**

**Jean-Philippe Rameau** Overture to Dardanus

**Jean-Philippe Rameau** Laboravi clamans

**Jean-Philippe Rameau** In convertendo Dominus

**Roger Hamilton, Stuart Overington, Elspeth Slorach** conductors

Free admission, no ticket required



12pm  
// Forman Lecture Theatre

**PRE-CONCERT TALK**

Join Dr Amanda Babington as she explores how France's enfant terrible Jean-Philippe Rameau divided audiences with his bold new style.

Free admission, no ticket required

RNCM  
ENGAGE



**THU 30 NOV //** 7.30pm  
// RNCM Concert Hall

**THE PHANTOM OF THE OPERA (1925)**

**FILM SCREENING WITH LIVE ORGAN ACCOMPANIMENT**

**Darius Battiwalla** organ

Following our sell-out screening of Fritz Lang's *Metropolis* in 2016, we've selected another silent classic and given *French Connections* a celluloid dimension.

Based on Gaston Leroux's novel, this 1925 version of *The Phantom of the Opera* remains one of the definitive masterpieces of silent horror. The story becomes a Gothic nightmare with many of the scenes focusing on the creepy, cobweb-ridden corridors of the opera house. Shocking for its time, it also features one of the most memorable scare scenes of the silent era - the sudden unmasking of Erik, the Phantom of the piece (played by Lon Chaney in the performance of his career...)

In essence a beauty and the beast fable, the film revolves around the heavily disfigured

composer Erik, who haunts the tunnels and the backstage of the Paris Opera. He soon falls in love with the young chorus girl Christine and forces her to sing his composition after he has captured her and taken her to his domain. He informs the Opera owners of the consequences they will face if Christine does not perform his masterpiece. However, the trouble really starts when Christine leaves Erik and meets her true love Raoul. It is at this point that Erik's dark side takes over and he imprisons Christine in the eerie bridal suite in his cellar. And then the fun really begins...

Tickets £14



6.30pm  
// Carole Nash Recital Room

**SPOTLIGHT: M/D/R/S** - A new quasi-chamber-opera loosely based around the lives of Romy Schneider and Marlene Dietrich

Free admission, no ticket required

**FRI 01 DEC // 7.30pm**  
// RNCM Concert Hall

## ROOF ST PETERSBURG

### ANNUAL CHARITY CONCERT

A taste of the Russian soul through the enchanting sounds of balalaika and domra. Manchester's unique Kallinka Balalaika Orchestra and guests perform in aid of disadvantaged children in St Petersburg.

Tickets £7.50  
Promoted by ROOF St Petersburg

**SUN 03 DEC // 10am, 1.30pm  
and 5pm**  
// RNCM Concert Hall

## TRAFFORD MUSIC SERVICE WINTER CONCERTS

Tickets £9  
Promoted by Trafford Music Service

**MON 04 DEC // 1.15pm**  
// RNCM Concert Hall

## MONDAY RECITAL SERIES

**Gioachino Rossini (arr  
Ginzburg)** Figaro's Aria from  
*The Barber of Seville*  
**Franz Liszt** Hungarian  
Rhapsody No 2 in C sharp minor  
**Nadya Kisseleva** *piano*

**Derek Bourgeois** Trombone  
Quartet Op 117

**Northern Trombone Quartet:**  
**Samson Chan, George Hardwick,  
Ross Marshall, Jack Percy**

Free admission, no ticket  
required

**MON 04 DEC // 7.30pm**  
// RNCM Concert Hall

## MANCHESTER CHRISTIAN UNIONS CAROL CONCERT

Join the Christian Unions of Manchester for their fourth annual carol service, which promises to be a joyous and thought-provoking event with well-loved carols led by RNCM musicians

Tickets £5  
Promoted by Manchester Christian  
Unions



**WED 06, FRI 08, TUE 12,**  
**THU 14 DEC // 7.30pm**  
**SUN 10, SAT 16 DEC // 3pm**  
// RNCM Theatre

## **CINDERELLA (CENDRILLON)**

### **JULES MASSENET**

*Martin André conductor*

*Olivia Fuchs director*

*Yannis Thavoris set and costume designer*

*Sergej Bolkhovets assistant conductor*

*Bethan Rhys William choreographer, production assistant*

*Kevin Thraves chorus master*

**RNCM Opera Orchestra**

**RNCM Chorus**

A fairytale for the festive season, in *Cendrillon*, Jules Massenet gives the story of Cinderella a perfect French operatic form with plenty of wit and style. This opera reveals Massenet at his most inventive and highlights his gift as a comic composer.

Based on Charles Perrault's fairytale, in this opera, Cinderella has a stepmother and two stepsisters and the Fairy Godmother who helps her to go to the palace ball. However, after midnight, the opera takes a different turn from the original tale: not upset by the hateful suggestions of her stepmother and stepsisters, Cinderella runs away from home. Feverish, she arrives in the Fairy Godmother's magic forest and meets the Prince once more. He recognises the beautiful, mysterious girl from the ball and offers her his heart.

Months later, when we catch up with Cinderella again, her father has convinced her that it was all a dream. But, when the Prince is travelling the length and breadth of the country to find the owner of the glass slipper, he recognises Cinderella and she returns his love.

*Cendrillon* is a thrilling work, alive with drama, humour and even a touch of bitter sarcasm. It takes us to a fanciful time

and place, with vividly drawn characters, magical love, and enchanting dreams – plus the music is as appealing, and dreamily expressive, as anything Massenet ever composed.

This production will be sung in French with surtitles.

### **SPECIAL UNDER 18s TICKET OFFER**

If you are under 18, you can save 50% on your *Cinderella* tickets.

Tickets £34 £28 £21 (weekdays)

Tickets £36 £30 £23 (weekends)

**+**

**FRI 08 DEC // 6pm**

// Forman Lecture Theatre

### **FORUM PLUS – Re-Fitting the Slipper: Massenet's slant on an age-old story**

with Dr Clair Rowden and Professor Richard Langham Smith

Free admission, no ticket required

**RNCM ENGAGE**

**FS**



**THU 07 DEC // 1.15pm**  
// RNCM Concert Hall

## RNCM STRING AND WIND ORCHESTRAS

**Camille Saint-Saëns** Orient et Occident Op 25

**François-Joseph Gossec** Marche  
**W A Mozart** Adagio and Fugue in C minor K 546

**Maurice Ravel (arr Barshai)**  
String Quartet in F major (1st movement)

**Chris Hoyle, Mark Heron, Alex Webb** *conductors*  
**Catherine Yates** *director*

Free admission, no ticket required

**SAT 09 DEC // From 10.15am**  
// Various Venues

## JUNIOR RNCM PERFORMANCE DAY

Performance Day profiles the work of the full range of Junior RNCM ensembles, from Symphony Orchestra and Vocal Ensemble to the Foundation Section and Brass Band. For full details, contact the Junior RNCM on 0161 907 5264.

Free admission, no ticket required

**MON 11 DEC // 1.15pm**  
// RNCM Concert Hall

## MONDAY RECITAL SERIES

**Samuel Barber** Selections from Souvenirs Op 28

**Greta Gasser** *piano*

**George Gershwin (arr Strickland)** An American in Paris

**Chameleon:**

**Jessica Tomlinson** *clarinet*

**Anna Murphy** *flute*

**Joshua Jones** *saxophone*

**George Strickland** *oboe*

**Eleanor Mills** *bassoon*

Free admission, no ticket required

**MON 11 DEC // 7.30pm**  
// RNCM Concert Hall

## CHINEKE! ENSEMBLE

Programme to include:

**Joseph Boulogne (Chevalier de Saint-Georges)**

String Quartet No 2 in E flat major

**Ludwig van Beethoven** Septet in E flat major Op 20

As you may well know, the Chineke! Foundation was established in 2015 to provide career opportunities to young Black and Minority Ethnic (BME) classical musicians in the UK and Europe (its motto - 'championing change and celebrating diversity in classical music'.) The Chineke! Orchestra is led by Tai Murray and you'll see a lot of them this Summer at the BBC Proms and other big festivals.

A smaller Chineke! Ensemble has been put together for this special event, featuring double bassist Chi-chi Nwanoku OBE. We're particularly pleased to welcome violinist Didier Osindero, who was recently awarded the ABRSM undergraduate scholar award to study at the RNCM - and starts here in September!

Tickets £18 £15



**TUE 12 DEC // 7pm**  
// RNCM Concert Hall

## CHEADLE HULME SCHOOL

### A CHRISTMAS CELEBRATION

Tickets £7

Promoted by Cheadle Hulme School

**TUE 12 DEC // 8pm**

// Carole Nash Recital Room

## DECONTAMINATION #11

### NEW, RE-IMAGINED AND MODIFIED INSTRUMENTS

Programme to include:

**Eleanor Cully** Fixations

**Amir Sadeghi Konjani** New work

For the latest event in our *Decontamination* contemporary music series, we explore music that uses instruments in unconventional ways to produce new sounds - turning musical concepts on their heads. For example, Eleanor Cully's *Fixations* is a piece of experimental sound art that provides performance directions such as: 'hold a non-guitar in the position of a guitar and strum the body.'

Tickets £8





**WED 13 DEC // 7.30pm**  
// RNCM Theatre

**RNCM BIG BAND  
WITH ALAN BARNES  
A JAZZ CHRISTMAS CAROL**

**Mike Hall** *director*  
**Alan Barnes** *saxophone, clarinet*

Following the success of last year's festive Big Band/Chamber Orchestra collaboration *Luca's Winter*, we're going to once again dive into the realms of story-telling with Alan Barnes' jazzy interpretation of Charles Dickens' *A Christmas Carol*. And tonight marks the world première of Alan's version for Big Band.

Alan wrote the original suite of pieces to take the audience through the characters

and scenes of Dickens' Christmas classic. Readings from the novel tell the story, and after each scene, musicians bring the characters to life, switching audiences from hilarity to pathos.

Various instruments represent Scrooge, Bob Cratchit, Marley's Ghost and others. Just as Scrooge's ghosts take him on a tour of his life, so the movements of this suite have a benevolent presiding ghost, celebrating the spirit of jazz greats past and present.

The music and readings flow together to inspire the full range of Dickens' imagination and emotion; from terror and remorse through to love and then irresistible joy.

So have yourself a jazzy little Christmas...

Tickets £18 £15



**THU 14 DEC // 1.15pm**  
// RNCM Concert Hall

**RNCM CONCERT  
ORCHESTRA  
WITH PRINCIPALS FROM  
MANCHESTER CAMERATA**

**Luigi Cherubini** *Faniska*:  
Overture  
**Ludwig van Beethoven** *Symphony*  
No 1 in C major Op 21  
**Alex Robinson, Orr Guy, Diogo  
Costa, Alex Webb** *conductors*

Free admission, no ticket  
required



2.15pm  
// Carole Nash Recital Room

**SPOTLIGHT: The Elysian  
Trio** - A recital of new and  
unknown compositions for  
piano trio

Free admission, no ticket  
required

**FRI 15 DEC // 6pm**  
// Carole Nash Recital Room

**RNCM BAROQUE  
SOLOISTS**

**George Frideric Handel** *Trio*  
*Sonata Op 5 No 2 in D major*  
**François Couperin** *Leçons de  
ténèbres No 3*  
**Jean-Marie Leclair** *Trio*  
*Sonata Op 4 No 2 in B flat  
major*  
**Marc-Antoine Charpentier** *Noël  
sur les instruments*

**Roger Hamilton** *director*  
Free admission, by ticket  
only

**SAT 16 DEC // 7.30pm**  
// RNCM Concert Hall

**SALFORD  
CHORAL SOCIETY**

**George Frideric Handel**  
*Messiah*  
**Northern Baroque Sinfonia**  
**Tom Newall** *conductor*  
**Charlotte Hoather** *soprano*  
**Emma Stannard** *mezzo-soprano*  
**Alex Grainger** *tenor*  
**Matthew Mannion** *baritone*

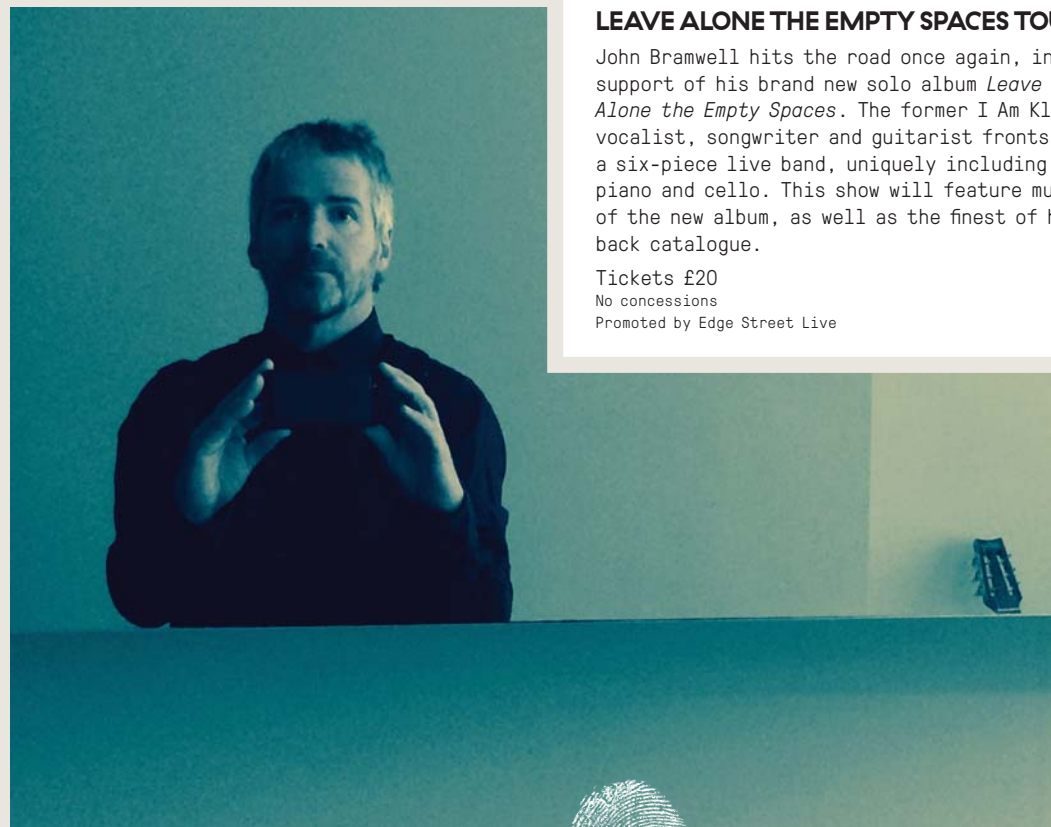
Tickets £17  
Promoted by Salford Choral Society

**FRI 15 DEC // Doors 7pm**  
// RNCM Concert Hall

**JOHN BRAMWELL  
LEAVE ALONE THE EMPTY SPACES TOUR**

John Bramwell hits the road once again, in support of his brand new solo album *Leave Alone the Empty Spaces*. The former I Am Kloot vocalist, songwriter and guitarist fronts a six-piece live band, uniquely including piano and cello. This show will feature much of the new album, as well as the finest of his back catalogue.

Tickets £20  
No concessions  
Promoted by Edge Street Live



**SUN 17 DEC // 11am-4pm**

// Various Venues

## RNCM CHRISTMAS FAMILY DAY

Come and join us for our annual day of festive activities and musical treats, including a screening of the magical film *The Bear* by Raymond Briggs and Howard Blake, with live orchestra and soloists.

For full details visit

[www.rncm.ac.uk/christmasfamilyday](http://www.rncm.ac.uk/christmasfamilyday)

Tickets £8

Suitable for ages 3 and above

RNCM  
ENGAGE



**TUE 19 DEC // 7.30pm**

// RNCM Concert Hall

## XAVERIAN COLLEGE CHRISTMAS CONCERT

Tickets £10

Promoted by Xaverian College Manchester

**WED 20 DEC // Doors 7pm**

// RNCM Theatre

## ELIZA CARTHY AND THE WAYWARD BAND

Following the huge success of their 2016 UK tour, Eliza Carthy and The Wayward Band return to Manchester for a special show at the RNCM.

The band released *Big Machine* to critical acclaim in February 2017. The album is undoubtedly one of Eliza's most adventurous and accomplished works to date and their live show, which features a who's who of names in the folk world, is equally as impressive, ambitious and exhilarating. First assembled in 2013 by English traditional folk powerhouse Eliza to explore and celebrate her long and varied career in folk music, The Wayward Band loved playing together so much it seemed natural and inevitable that this 12-piece would set about recording an album. Early in 2016 they did just that and *Big Machine* was the result.

'...*Big Machine* is Carthy's best in years...' Financial Times \*\*\*\*\*

Tickets £22 advance

No concessions

Promoted Band on the Wall

## COMING SOON

**13-14 JAN**

## RNCM STRINGS FESTIVAL

Eminent artists perform masterpieces from both sides of the channel. RNCM students join the Hallé orchestra for the closing concert, conducted by Sir Mark Elder.

**01 MAR // 7.30pm**

// RNCM Concert Hall

## RNCM-PARIS CONSERVATOIRE SYMPHONY ORCHESTRA

Featuring Debussy, Elgar and orchestral music from Wagner's *The Ring*.

Markus Stenz conductor

**09-11 MAR**

## RNCM CHAMBER MUSIC FESTIVAL FRENCH CONNECTIONS

Guests to include Quatuor Voce and Talich Quartet.

**SAT 17, MON 19, THU 22, FRI 23 MAR, SUN 25 MAR**

// RNCM Theatre

## HANSEL AND GRETEL

### ENGELBERT HUMPERDINCK

Anthony Kraus conductor



**Liberty Living**

student accommodation

**'IT IS A GREAT LOCATION BECAUSE WE ARE CLOSE TO THE CITY CENTRE AND SO CLOSE TO CAMPUS. IT IS REALLY NICE TO SHARE A FLAT WITH PEOPLE WHO HAVE THE SAME INTERESTS. I FEEL AT EASE HERE.'**

Ines, RNCM student and Sir Charles Groves Hall resident

Liberty Living is home to 23,000 students across nineteen UK cities including Manchester where we have three student residences; Sir Charles Groves Hall next to the RNCM, Liberty Point next to Manchester Piccadilly train station and the 34 storey Liberty Heights in the city centre. We are delighted to sponsor a scheme to enable all of our Manchester-based students access to £3 tickets to key RNCM performances throughout 2017/18.

For more information on how to book a £3 ticket, Liberty Living students should visit [www.rncm.ac.uk/libertyliving](http://www.rncm.ac.uk/libertyliving), contact the RNCM box office on **0161 907 5555** or speak to their reception team.

## Ways to save money at the RNCM

There are lots of ways to save money when you visit the RNCM, depending on the frequency of your visits, the size of your party and which benefits are important to you. We've outlined a few options below...



### Become a member

For £30 a year for individual Members and £50 for joint Members. Benefits include:

- Receive news and electronic updates from the RNCM
- Advanced electronic notice of upcoming performances
- Priority booking for selected performances
- 15% discount on selected performances
- £15 opera tickets (one per Member, per opera run). Where the opera production is double-cast, Members will be able to book an additional £15 ticket to see the alternative cast.
- Save 10% on food purchases in our restaurant Brodsky

For more information visit [www.rncm.ac.uk/members](http://www.rncm.ac.uk/members) or contact our Box Office on **0161 907 5555**.

### Book a Flexible Series

- Save 15% or more on your tickets by creating your own Flexible Series. Just choose the 3+ concerts you would like to attend marked with **FS** in this brochure.
- The more you book, the more money you save. Book 3-5 concerts and save 15%, book 6-9 concerts and save 20% and book 10+ concerts and save 25%.
- There are no booking fees for events purchased as part of a Flexible package.

For more information visit [www.rncm.ac.uk/flexi](http://www.rncm.ac.uk/flexi) and to book a Flexible Series package contact our Box Office on **0161 907 5555**.

### Become a Group Booker

For events that are promoted by the RNCM, we have generous discounts available depending on the size of your group. For example:

**Groups of 10-29 save 15%**   **Groups of 30-49 save 20%**   **Groups of 50+ save 25%**

- Group organisers can claim an additional free ticket
- There are no booking fees on group bookings

For more information visit [www.rncm.ac.uk/groups](http://www.rncm.ac.uk/groups) and to make a group booking, contact our Box Office on **0161 907 5555**.

For school groups of 10+ we also have a limited number of seats available for events promoted by the RNCM. To receive regular updates about school events and special offers visit [www.rncm.ac.uk/signup](http://www.rncm.ac.uk/signup)

Just a quick reminder that concessions are available for events promoted by the RNCM.

For more information visit [www.rncm.ac.uk/discounts](http://www.rncm.ac.uk/discounts)

And to keep in touch with news about performances at the RNCM and to hear about special offers etc, sign up to receive our events e-newsletter at [www.rncm.ac.uk/signup](http://www.rncm.ac.uk/signup)

## RNCM ENGAGE

From the excitement of school children composing and performing their own opera, to Family Days and the invaluable work of Music for Health in hospitals and care homes, RNCM Engage reaches out to our regional communities and individuals, spreading the message that music connects; that it can enrich, comfort, inspire, challenge, channel, educate... whoever you are. For more information please visit [www.rncm.ac.uk/engage](http://www.rncm.ac.uk/engage)

### Learning and Participation

The Learning and Participation team delivers events including an annual Children's Opera Project (see p26), Family Days (see p44), our Young Explorers Concert Series (see p10) and RNCM Young Company, our musical theatre group, a low-cost, non-audition group for all young people of secondary school age. In addition the team designs bespoke projects for a range of community groups. Contact Fiona Stuart on **0161 907 5281** or [communityoutreach@rncm.ac.uk](mailto:communityoutreach@rncm.ac.uk)

The RNCM Learning and Participation team is grateful for the support of the Eric and Margaret Kinder Charitable Trust, the Lauriston Trust, the Leverhulme Trust, the Patron's Fund and the Zochonis Charitable Trust.

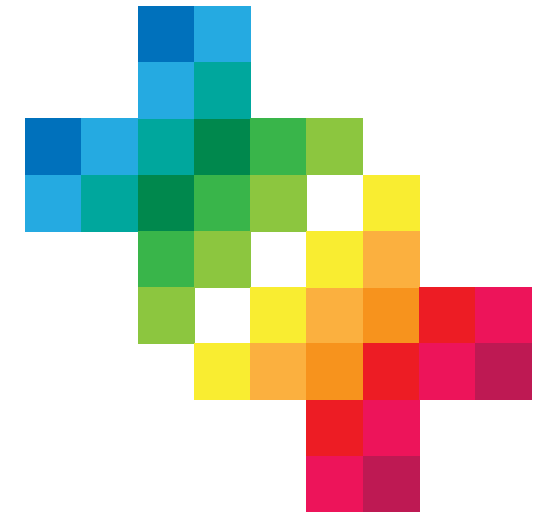
### The Sir John Manduell Research Forum Series at the RNCM

Our Research Forums are FREE and open to the public with no ticket required; RNCM staff and guest speakers give presentations on an aspect of their work - whether it's musicological, creative, educational, music-psychological or other kinds of research. The talks last about 45 minutes and then the floor is open for questions and discussion. Read more about these sessions at [www.rncm.ac.uk/researchforums](http://www.rncm.ac.uk/researchforums)

### RNCM Historic Instrument Collection

Autumn 2017 opening hours at [www.rncm.ac.uk/instrumentcollection](http://www.rncm.ac.uk/instrumentcollection)

## RNCM



WITH YOU we can enhance the cultural life of Manchester

WITH YOU we can support the next generation of musicians

WITH YOU we can ensure all our students fulfil their potential

THE RNCM  
SOUNDS BETTER WITH YOU

For more information visit our website at

[www.rncm.ac.uk/withyou](http://www.rncm.ac.uk/withyou)



## Looking for a Venue or Musicians?



The RNCM has a wide selection of excellent purpose-built spaces to hire for every type of event, performance or conference. Following a £7.1 million refurbishment project completed in November 2014, our largest spaces have now been revitalised with excellent back of house facilities and the latest technical set-up, including a new lighting rig and sound equipment.

### Venues for Hire

The **RNCM CONCERT HALL** has a variety of flexible options for your event with layouts including 445 capacity seating on Level One, 610 capacity seating with our new Balcony and Oglesby Balcony open, or even up to 730 capacity seating with a reduced stage size for amplified bands and small ensembles (NB – please speak to our Events Manager for further details about the 730 layout).

The **RNCM THEATRE** boasts one of the largest theatre stages in Manchester with ample wing space, orchestra pit, lighting box area and space for a sound desk in addition to the seated capacity. There are 607 seats in the Theatre with an option to place additional audience seating over the orchestra pit, taking the total maximum capacity to 657 seats.

The **FORMAN LECTURE THEATRE** has a 150 capacity and has been completely updated following the refurbishment project. It comes equipped with projector, screen and is ideal for pre-concert talks, discussions, presentations and screenings.

For performance enquiries please contact our Events Manager, Paul Cobban on **0161 907 5289** or **paul.cobban@rncm.ac.uk** or for full venue information and technical specifications please visit **www.rncm.ac.uk/hire**

For Conference enquiries please contact our Conference and Catering Team on **0161 907 5353** or **hospitality@rncm.ac.uk** The RNCM also has a number of smaller spaces for conferences including our 110-seater Carole Nash Recital Room and 60-seater Conference Room.

### Looking for Musicians

The RNCM's Professional Engagements team co-ordinates a large number of engagements from weddings to corporate events, on behalf of music societies, clubs, companies and individuals. Contact the Professional Engagements Team on **0161 907 5352** or **rebecca.parnell@rncm.ac.uk** for further details.

## Food and Drink at the RNCM

Why not join us at the RNCM for a unique dining experience? Choose from a tasty snack in our Café, a pre-concert bite from the Concert Bar menu, or a three-course meal in our Brodsky Restaurant. Our delicious food is home cooked and locally sourced using the freshest ingredients.



### Brodsky (\*open from Mon 18 Sep)

We are open from 11am-4pm Monday to Friday during term time, so come and sample our popular lunchtime menu from 12noon.

Pre-theatre dining is also available Monday to Saturday from 5pm (on performance evenings) with two courses costing just £15.95 and £19.95 for three courses. To avoid disappointment please reserve your table in advance by calling **0161 907 5353**.

Brodsky will be closed for the Christmas vacation from Sun 17 Dec.

### Concert Bar

The Concert Bar lite-bite menu is available from 5pm-7pm (during term time) simply order at the bar. Please note this menu is not available on Sundays. You can also avoid the queues and pre-order your interval drinks prior to the start of the concert.

### Café

Enjoy a wide range of drinks, snacks and delicious cakes from our Café.

### Hospitality at the RNCM

The RNCM can also provide catering for social functions, events, and private dinners. You can even hire Brodsky, our Restaurant, outside of term time.

Please contact our Conference and Catering Team on **0161 907 5353** or **hospitality@rncm.ac.uk** for further details.

All food items and menus are subject to availability. Outside of term time and at weekends, opening hours are dependent upon the performance programme.

For full details of menus and opening hours please call **0161 907 5353** or **5252** or visit **www.rncm.ac.uk/foodanddrink**

# Booking Information and Getting Here

**Save Money!**

There are several ways that you can save money when you visit the RNCM – either as a group booker or via our Flexible Series or our RNCM Membership scheme. See p46 for details.

## Booking by phone

0161 907 5555

## Booking in person or by post

Box Office, RNCM,  
124 Oxford Road,  
Manchester M13 9RD

## Booking Fees

A booking fee of £1 per ticket applies to most transactions. No booking fee applies to tickets bought in person at the Box Office.

## Payment

Payment can be made by cash, Mastercard, Visa or Maestro.

## Enquiries by email

[box.office@rncm.ac.uk](mailto:box.office@rncm.ac.uk)

## Box Office opening hours

11am - 6pm  
Monday to Saturday  
(later on performance nights)

Sunday 1 hour before performances  
(closed on non-performance Sundays)

For full terms and conditions visit [www.rncm.ac.uk/whats-on/terms](http://www.rncm.ac.uk/whats-on/terms) or contact the Box Office.

## Concessions

For events promoted by the RNCM, concessions are available to under-18s, students, over 60s and claimants (in receipt of JSA or ESA). For all events taking place at the RNCM, disabled patrons who require an essential companion in order to attend, can claim up-to-two tickets for the total value of a single full price ticket. For other events please check with the Box Office on 0161 907 5555 or go to [www.rncm.ac.uk/whats-on](http://www.rncm.ac.uk/whats-on) for more details. Please note proof of concession may be required. For full details of concessionary tickets please check with the Box Office or visit [www.rncm.ac.uk/discounts](http://www.rncm.ac.uk/discounts)

## Ticket Exchange & Refunds


For full details on ticket exchanges and our refund policy please visit [www.rncm.ac.uk/exchanges](http://www.rncm.ac.uk/exchanges)

Please note, refunds are only made in the case of a cancelled performance.

## Group Discounts

Discounts are available for groups of 10 or more for all events promoted by the RNCM. For more information contact the Box Office or visit [www.rncm.ac.uk/groups](http://www.rncm.ac.uk/groups)

## Flexible Series

Save 15% or more on your tickets by creating your own flexible series. Simply choose at least 3 concerts you'd like to attend (marked with  logo).

## Sonic Manchester



Sonic Manchester is a free scheme for students run by the RNCM, The Bridgewater Hall, BBC Philharmonic and Manchester Camerata. It gives students the opportunity to buy tickets from as little as £3. For more information and to sign up for the latest offers, please visit [www.facebook.com/sonicmanchester](http://www.facebook.com/sonicmanchester)

## Email & Mailing List

Keep in touch with events at the RNCM by joining our free mailing list for regular updates. Sign up at [www.rncm.ac.uk/maillinglist](http://www.rncm.ac.uk/maillinglist) or contact the Box Office for details.

## Access

All public spaces and facilities are accessible to wheelchair users (via lifts). Free parking is also available for disabled patrons, reserve your space with reception on **0161 907 5300**. Please contact the Box Office or visit [www.rncm.ac.uk/access](http://www.rncm.ac.uk/access) for detailed access information.

## How to find us

Oxford Road station is the closest railway station and is a 15 minute walk away. Go to [www.tfgm.com](http://www.tfgm.com) for details of public transport in the Greater Manchester area. Please also see [www.tfgm.com/buspriority](http://www.tfgm.com/buspriority) to see how your route to the RNCM may have changed as a result of the

city-wide Bus Priority Scheme. For more detailed information and a map of how to find us please visit [www.rncm.ac.uk/visit](http://www.rncm.ac.uk/visit)

## Parking

The RNCM car park is located next to the College in the basement of the Sir Charles Groves Hall of Residence, off Rosamond Street West. Open from 5pm weekday evenings and 6am-11.30pm at weekends, costing £3.50 (payable on foot at the machine any time after arrival). Closes at 11.30pm. Please note that the underground car-park entrance/exit is 2.1 metres high and 2.3 metres wide. Customers who own larger vehicles may wish to consider using alternative car parks in order to reduce the risk of damage to vehicles. Other car parking options are available at [www.rncm.ac.uk/parking](http://www.rncm.ac.uk/parking)

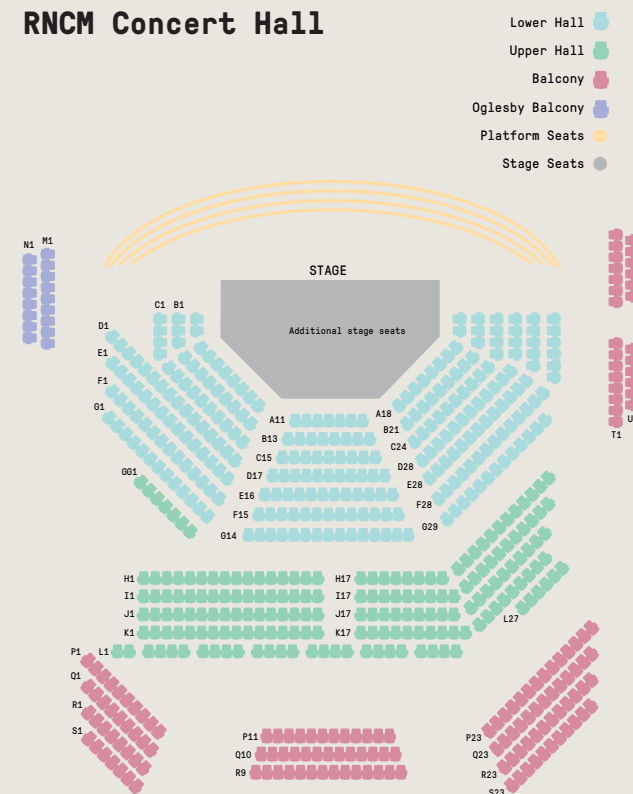
Please note, due to recent carriageway changes made by TfGM, visitors can no longer exit Rosamond Street at the junction with Oxford Road (as it is now one way) and are therefore encouraged to exit either via Higher Cambridge Street or Higher Chatham Street.

Artists and programmes are correct at the time of going to press and we reserve the right to change artists and/or programmes without notice if necessary. If you have any comments please contact Head of Marketing & Communications, RNCM, 124 Oxford Road, Manchester M13 9RD.

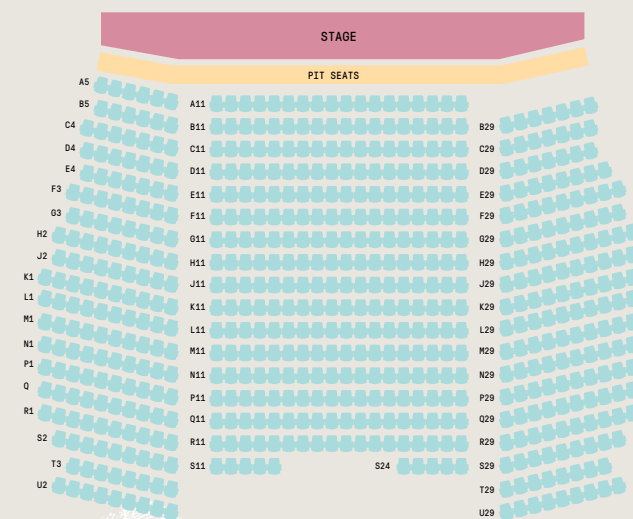
## Seating Plans

For a more detailed layout of our venues please visit [www.rncm.ac.uk/seatingplans](http://www.rncm.ac.uk/seatingplans)

## RNCM Concert Hall



## RNCM Theatre



## Sponsors and Supporters

CLASSIC *fm*

ERIC AND MARGARET  
KINDER CHARITABLE  
TRUST



The Leverhulme Trust



THE PATRON'S FUND



ZOCHONIS  
CHARITABLE  
TRUST

## Event Partners

